

2024 ANNUAL REPORT

VISION: In the words of Frank Lloyd Wright, “to make life more beautiful, the world a better one for living in, and to give reason, rhyme, and meaning to life.”

MISSION: The Frank Lloyd Wright Foundation inspires people to discover and embrace an architecture for better living through meaningful connections to nature, the arts, and each other.

Dear Friends,

As we reflect on the milestones of 2024, it's a pleasure to share the progress and achievements of the Frank Lloyd Wright Foundation. With your generous support, we have continued to preserve and celebrate Frank Lloyd Wright's legacy, ensuring his philosophies inspire generations to come.

This year, over 132,000 visitors from around the world explored the historic Taliesin and Taliesin West properties. Our Tours program alone served 91,192 guests, offering both guided and audio tours that brought Wright's visionary designs to life. Beyond tours, we welcomed 4,660 participants to cultural programs, including lectures, film screenings, and wellness activities. Our youth and family initiatives reached 2,521 children, students, and educators through camps, field trips, and Girl Scouts programs, while Member Programs drew 491 attendees to exclusive talks and events.

One of the year's highlights was our original exhibition, *American Icons: Wright & O'Keefe*, featuring photographs and imagery by Tony Vaccaro. The opening reception alone attracted 136 visitors, and many returned to immerse themselves in the connection between these two legendary figures.

In 2022, we launched the Taliesin Institute, amplifying Wright's architectural and cultural legacy. This initiative fostered partnerships with academic and cultural organizations worldwide. A standout achievement was the opening of *Wright's Imperial Hotel at 100: Frank Lloyd Wright and the World*, a major exhibition in Japan celebrating the centennial of Wright's Imperial Hotel. Visited by nearly 100,000 people, the exhibition traveled to three prestigious venues, underscoring Wright's status as one of the first global architects. Additionally, the Institute hosted 427 students and faculty from international universities at Taliesin and Taliesin West, furthering educational engagement.

Our Collections Department achieved significant milestones, supported by grants from the National Endowment for the Humanities, the Arizona Humanities Research and Archives Board, and the Institute of Museum and Library Services. Over 1,500 fine and decorative art objects were cataloged, while improved storage solutions and conservation projects, such as the preservation of a Coromandel screen, ensured the long-term care of Wright's works. Summer internships funded by the Arizona Architecture Foundation brought fresh energy to these endeavors.

Preservation efforts remained central to our mission. At Taliesin, the Hillside Theater restoration was completed in June, incorporating accessibility features that enabled original Fellowship members to attend the reopening. We also inaugurated the Phoebe Point Trail, a 1.1-mile loop created in partnership with the Driftless Area Land Conservancy. Meanwhile, upgrades to dorm rooms near the Hillside Drafting Studio have enhanced accommodations for the Taliesin Institute's growing programs.

At Taliesin West, we completed critical infrastructure projects, including a new water supply and wastewater system. Immediate needs, like replacing the HVAC system at the William Wesley Peters Library, were addressed to maintain the integrity of the site. Other efforts included mechanical upgrades to Crescent 1 and the replacement of the dining room's fabric ceiling.

Looking ahead, we're excited to welcome new leadership as we search for a successor to Chief Executive Officer Stuart Graff, whose eight years of service have profoundly shaped our organization. Stuart's commitment and vision leave a lasting legacy, and we are grateful for his contributions.

Your dedication fuels our mission, and we thank you for making 2024 a transformative year. We invite you to visit our properties, engage with our programs, and continue supporting Wright's extraordinary vision. Together, we ensure his enduring impact on design, nature, and society.

In gratitude,



Mark Dreher, C.P.A.
Chair, Frank Lloyd Wright Foundation
Board of Trustees



Scott McDaniel, C.P.A.
Vice President Chief Finance and Administration Officer

BOARD AND EXECUTIVE TEAM SPOTLIGHT

WELCOME TO THE BOARD OF TRUSTEES



JULIE WESTRA

Julie Westra is Assistant General Counsel and Head of Government Affairs for Steelcase Inc., the company trusted by organizations around the world to create inspiring, sustainable, and adaptable workplaces. Julie came to Steelcase in 2020 focusing primarily on transactional legal support for clients in varying departments such as Marketing, Social Innovation, HR and other areas. She took on the additional duties of Head of Government Affairs at Steelcase in January 2022. She is passionate about growing her knowledge around business strategy and development in the pursuit of providing understandable and relatable legal guidance to her business clients.



MATTHEW CHIARELLO

Matthew Chiarello is a business lawyer at Snell & Wilmer specializing in employee benefits and executive compensation. An Arizona native, Matthew graduated with distinction from the University of Pennsylvania and William & Mary Law School. He serves on the Board of Directors for UMOM New Day Centers and as President of the Western Pension & Benefits Council. Matthew lives in Phoenix with his wife and daughter. He is an avid traveler and writer.



DANIEL RUIZ

Daniel Ruiz is Chief of Staff for Blue Cross Blue Shield of Arizona. In this role, he is responsible for driving the CEO's priorities, building collaboration and accountability among staff to achieve the company's strategic goals, and managing internal and external communications for the CEO. Daniel also serves as the liaison to the Board of Directors. Before joining Blue Cross Blue Shield of Arizona, Daniel led a 20-year career in public service at various government agencies, including the Citizens Clean Elections Commission, the Maricopa County Recorder's Office & Elections Department, and the Office of the Arizona Governor.

WELCOME TO THE EXECUTIVE TEAM



SCOTT MCDANIEL

Vice President and Chief Finance and Administration Officer

Scott McDaniel is an Arizona native, and a graduate of Arizona State University with a bachelors degree in Accounting. Mr. McDaniel has been a Certified Public Accountant since 1987, and has held positions in the oil and gas industry, software development and sales, and for the past 20 years at various non-profit organizations in the cultural sector. He lives in Scottsdale with his wife Julie.



ANGY SHEARER

Vice President and Chief Advancement Officer

Angy Shearer is a seasoned fundraising professional with over 18 years of experience. She is passionate about serving organizations with meaningful missions. She has a proven track record of success in various nonprofit sectors, including animal rescue, foster care, early childhood education, behavioral health, and, most recently, the United Way of Tucson and Southern Arizona.

WELCOME TO THE BOARD OF GOVERNORS



ANNE NELSON

Anne Nelson is a lawyer and preservationist. She lectures on Historic Preservation Law at the University of Pennsylvania, Stuart Weitzman Graduate School of Design and has lectured at Goucher College. Anne is an Assistant General Counsel in the Office of General Counsel of the Smithsonian Institution in Washington, D.C. In this role, she provides legal advice and counsel to the institution on a variety of corporate and transactional matters with a focus on real estate and facilities, collections management, estates and planned-giving, and ethics.



BOB SKERKER

Bob Skerker spent more than 30 years operating a manufacturing and marketing company selling housewares products. After selling that business he was co-chair of the national preservation conference in 2011, was president of a start-up medical device development foundation and was interim executive director at a Canadian school that teaches restoration arts.



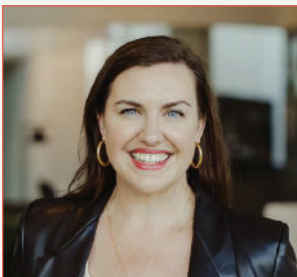
SEAN RUSH

Sean Rush was a CEO, Board Director, and leader in the design, development, and delivery of global education programs in both the for-profit and non-profit organizations. He led one of the largest NGOs dedicated to leveraging education as the enabler for young people on six continents to transform their future and capture economic success. Earlier, he built a sustained performance record of value creation for a Fortune 20 market leader driving their global education industry group to double digit growth.



MICHAEL DESMOND

Michael Desmond is a licensed architect, holds a Ph.D. in History, Theory & Criticism of Architecture from MIT, and a Master of Architecture in Urban Design from Harvard University. He has published various articles on Wright over the last twenty years, and most recently has been a contributing curator to the Museum of Modern Art exhibition Frank Lloyd Wright at 150: Unpacking the Archive. Desmond was the recipient of a Campus Heritage Grant from the Getty Foundation for the LSU campus. His book, "The Architecture of LSU", received the 30th Annual Mary Ellen LoPresti Art Publication Award from the Southeast Chapter of Art Libraries Society for excellence in 2014.



MEGHAN DEAN

Meghan Dean is General Manager of Design Brands and Partnerships for Steelcase Inc., the company trusted by organizations around the world to create inspiring, sustainable, and adaptable workplaces. Previous board experience includes the Art Institute of Chicago Young Professionals and Vital Bridges / Heartland Health in Chicago. She is currently serving as the Chair for Steelcase's annual United Way capital campaign. She also represents Steelcase on the board of Be Original Americas—a non-profit committed to preserving and protecting original design.

FAREWELL

■ STUART GRAFF

*Former President
and CEO*

■ KIMBERLEY VALENTINE

*Former Vice President and
Chief Advancement Officer*

■ SUE WHITMER

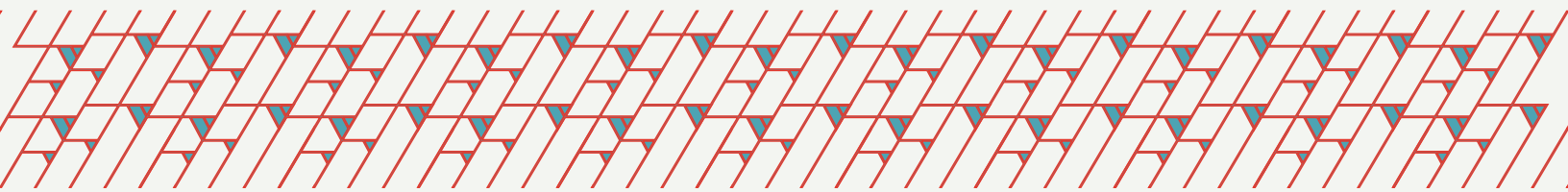
*Former Vice President
and Chief Finance and
Administration Officer*

■ LAURA ELEK CHESIRE

*Vice President of
Human Resources*

■ RICK BERNSTEIN

Former Board of Governors



FRED AND BECKY PAKIS

DONOR SPOTLIGHT: FRED AND BECKY PAKIS

We recently had the pleasure of leading two long-term donors, Becky and Fred Pakis, on a VIP tour with some of their friends. This opportunity led to an inspiring conversation, revealing a deep passion and strong commitment to Wright’s ideas, the Foundation’s properties, and the cultural impact they both have. In short, the Pakis’ are great champions of the Foundation. Originating in Ohio, the Pakis’ settled in Arizona in 1987 with the intent of starting a software company. From the very beginning, they frequently brought visitors to Taliesin West to give them a proper taste of their new life. Little did they know that their feature attraction would become a designated UNESCO World Heritage Site. After they took their company public in the late 90’s, they started a family foundation to focus on philanthropy. The Pakis’ have supported the Frank Lloyd Wright Foundation ever since.

How did you first encounter “Organic Architecture” or Frank Lloyd Wright?

Growing up in the Midwest, Frank Lloyd Wright and his work were already recognized as a national treasure. I recall being exposed to them in school textbooks and in magazines like *Life* and *Time*. I remember our family taking an early road trip to Fallingwater in Pennsylvania. The design concepts of integration with nature, unity of form and function, and human scale seemed to find a resurgence in society in the 70’s.

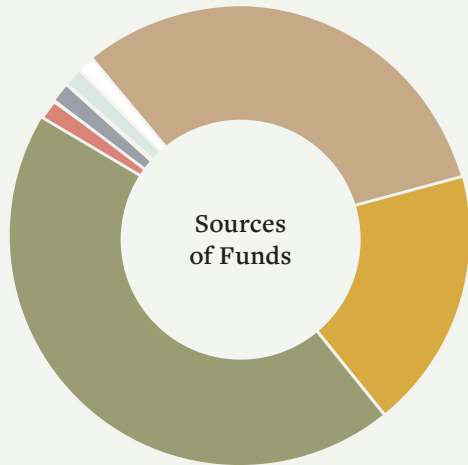
Taliesin and Taliesin West are historically and artistically important around the globe. Can you share a special connection or story about your ties to these unique places?

As we developed a new circle of friends in North Scottsdale, I met a Fellow who was my age and a graduate of the architecture school at Taliesin in the 70’s. He shared stories of designing and building a living space in the desert surrounding the site. If that wasn’t challenging enough, he had to don a tuxedo every Saturday night for dinner and a recital with Mrs. Wright. I still think about that every time I visit.

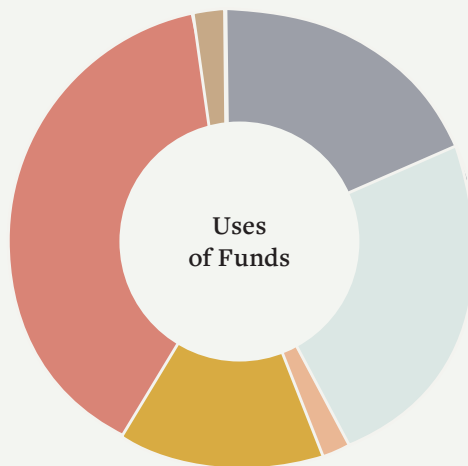
Donations are central to the Frank Lloyd Wright Foundation. What motivates you to support the Foundation through your contributions?

We view Taliesin West almost as a sacred place. It’s both a physical and spiritual embodiment of his ideas and vision anchored in the beauty of the Sonoran Desert. We find it easy to justify a gift to a space that has brought us so much pleasure over the years, whether for its preservation or for enhancing its public access.

Consolidated Statement of Financial Position as of July 31, 2024 (Audited)



40%	PUBLIC ACCESS
33%	LICENSING AND RETAIL
19%	CONTRIBUTIONS, GRANTS, AND MEMBERSHIPS
4%	NET REALIZED AND UNREALIZED GAINS ON INVESTMENTS
2%	INVESTMENT INCOME
1%	OTHER REVENUE
1%	EDUCATION



31%	PRESERVATION AND STEWARDSHIP
28%	TOURS AND PROGRAMS
23%	LICENSING, RETAIL, MARKETING, AND VISITOR SERVICES
13%	MEMBERSHIP AND FUNDRAISING
3%	TALIESIN FELLOWSHIP ¹
2%	ADMINISTRATION

ASSETS

Cash and Cash Equivalents	\$657,371
Pledges and Other Receivables	261,394
Inventories and Other Current Assets	411,374
Investments	2,651,534

TOTAL CURRENT ASSETS 3,981,673

Investments	3,059,725
Property, Plant, Equipment, Collections, and Archives	15,188,241

TOTAL ASSETS \$22,229,639

LIABILITIES AND NET ASSETS

Current Maturities of Capital Lease Payable	\$14,016
Accounts Payable and Accrued Expenses	832,733
Deferred Revenue	202,592

TOTAL CURRENT LIABILITIES 1,049,341

Finance Lease Payable Less Current Maturities	23,219
Long-Term Benefit Payable	7,500

TOTAL LIABILITIES 1,080,060
TOTAL NET ASSETS 21,149,579

TOTAL LIABILITIES AND NET ASSETS \$22,229,639

Consolidated Statement of Activities for the Year Ended July 31, 2024 (Audited)

REVENUE

Public Access (Admissions)	\$4,454,362
Licensing and Retail	3,667,258
Contributions, Grants, and Membership	2,055,764
Investment Income	218,679
Net Realized and Unrealized Gains on Investments	456,579
Education	75,417
Other Revenue	144,575

TOTAL REVENUE \$11,072,634

EXPENSES

Tours and Programs	\$3,396,657
Licensing, Retail, Marketing, and Visitor Services	2,828,896
Administration	272,684
Membership and Fundraising	1,624,060
Preservation and Stewardship	3,748,561
Taliesin Fellowship ¹	177,996

TOTAL EXPENSES 12,048,854

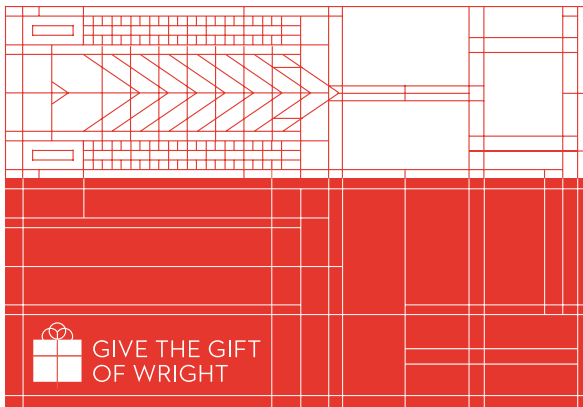
CHANGE IN NET ASSETS (\$976,220)

¹Taliesin Fellowship expense represents retirement commitments made to the apprentices of Frank Lloyd Wright who continue to live on the properties of Taliesin/Taliesin West.

2024 BY THE NUMBERS

2 WORLD HERITAGE PROPERTIES COVERING OVER **1,200** ACRES. ■ WELCOMED **132,695** VISITORS WITH **11** TOURS. ■ OVER **3,000** HOURS COMMITTED BY **118** GENEROUS VOLUNTEERS. ■ MORE THAN **\$20** MILLION IN ECONOMIC IMPACT IN AZ AND WI.* ■ SUPPORTED MORE THAN **200** JOBS, REPRESENTING MORE THAN **\$15** MILLION IN HOUSEHOLD INCOME TO FAMILIES.* ■ MORE THAN **\$1** MILLION IN LOCAL AND STATE TAX REVENUE FOR BOTH SITES.* ■ MORE THAN **\$2** MILLION IN FEDERAL TAX REVENUE FOR BOTH SITES.*

*SOURCES: 2024 ARTS & ECONOMIC PROSPERITY 6 CALCULATOR, AMERICANS FOR THE ARTS.



THINKING ABOUT GIVING THE GIFT OF MEMBERSHIP?

Membership benefits include: discounts at the Frank Lloyd Wright Store and on tours, camps, and other programming at Taliesin West; a subscription to the Quarterly magazine; and a subscription to our monthly e-newsletter. At the Insider level and above, members enjoy reciprocal benefits at over 30 participating Wright sites around the country.



Learn more about gifting a membership at:
FrankLloydWright.org/Membership

THE SHINING BROW LEGACY SOCIETY MEMBERS

Frank Lloyd Wright continues to inspire the world long after his passing. By including the Frank Lloyd Wright Foundation in their Planned Giving, these Shining Brow Legacy Society members help enable Wright's work to live on.

Anonymous (3)
Larry Berle
Mary and Richard Braun*
Kathryn S. and Thomas L. Brockhaus
Greggory A. Bruce
Robert K. Burdette, Jr. and Joye Marten Burdette
Gregory Coatsworth*
James W. Conn*, Architect
Clare and Loch Crane*
Heloise Crista*
Rachel K. Dirkse*
Walter H. Dunning and Betty* L. G. Dunning
Robert and Maxine Elkington*
Herbert Fritz*, Jr. and Eloise B. Fritz
Philip Garm
John Geiger*
Carol Gillham
Stuart Graff and Rob Chambers
Aaron G. Green*
Dorothy Hanson*
Richard H. Hall*
Mr. William B. Harrison, Jr.
John Hess
Esther and Jack* Holloway
Peter Kalapuziak and Clara J. Leong
Thomas M. Koehler
L. Elaine Koogler* and Philip J. Garm
Dolly Liang*
Susan J. Lockhart* and Neil Levine
Carol and H. Nicholas Muller*
Russell P. Neff*
Cynthia Anne Netherton*
Dottie O'Carroll
Bruce Brooks Pfeiffer*
John Rattenbury*
Paula and Fred L. Rega*
William F. Reinicker*
Karen S. Roberts
Arnold Roy*
Mark Stephen Saxton
James E. Schroeder*
Ms. R.K. (Shelley) Schwartz
Joan and Mack Schwing
Stephanie Strout
Richard Stuart
Kevin Swinehart
The Estate of Antony James Marshallsay
Mark Tlachac
Robert Van Ancum
Richard Berry von Hungen Groth*
Lori and Loren Wasserman

*connotes deceased donors

2024 DONORS

The Frank Lloyd Wright Foundation thanks the following individuals and organizations for their generous contributions to the Foundation. This list recognizes gifts received between January 1, 2024, and December 31, 2024.

\$100,000+

Anonymous (1)
Rachel Dirkse*
Richard Harrison Hall*
Talesin Preservation, Inc.

\$10,000-\$99,999

Anonymous (1)
180 Degrees, Inc.
Arizona Commission on the Arts
Mary and Joel Benkie
David Yurman Boutique
Fleckenstein Trust
Stuart Graff and Rob Chambers
Van Hohman
Imperial Hotel
Institute of Museum and
Library Services
Christina Lindal and
Cameron Thomas
Carol McMullen and Sean Rush
National Endowment
for the Humanities
Pakis Family Foundation
PHX Architecture
Gretchen* and
Robert Ravenscroft
WenChin Shi and Bing Hu
Robert Skerker
Diana and David Smith
Southwestern Foundation for
Education & Historical
Preservation
William and Gertrude Shelley
Family Foundation
Ashley and George Wilson

\$1,000-\$9,999

Anonymous (2)
Sandra Allen and
S. James Perlow
Arizona Architecture
Foundation
Arizona Historical Records
Advisory Board
Sara and Robert Awe
Richard A. Bernstein
Nancy and Warren Bryant
Katy and Matthew Chiarello
Jennifer Chow and
John Papandrea
Cox Communications -
Community Giving
Barbara and Steven Crystal
David Weekley Homes Arizona
Clare Davis and David Obedin
Calisle Dean
Delta Faucet Company
Betty and Bertram Feingold

Alice and Barry Fell
Bryan Hagen in honor
of Rebecca Hagen
Thomas Hagen
Jill and Robert Hartmann
Bonnie and Mark Howard
H & S International
Quinton Jenkins and Gil Agnew
Mary Jo Kasten and Keith Bible
Heather Lenkin
Anita Levin and John Rafkin
Luke Charitable Foundation
Dana and Bruce Macdonough
Maya Manny
Cathi and Ronald Marx
Emily and T.K. McClintock
Karen and John Meston
Paula Morency and Paul Dengel
Northern Trust Bank of Arizona
Peter Norum
Barbara and W. Kelly Oliver
Diana Pope
Marie Jose Poulet and
Frederick Prozzillo
Donna and Charles Reilley
Sidney Robinson
Mindy and Elyse Rosenberg
Rosewood Homes
Salt River Project (SRP)
Scottsdale Arts (Scottsdale
Cultural Council)
Ilene Shaw
Shell Oil Company Foundation
Marsha and John Shyer
Society of Architectural
Historians
Lauralu and Erik Spencer
Justin Steele
Storyrock Development
Corporation
Frederick P. Stratton, Jr.
Cille and Vernon Swaback
Patrice Taylor and
G. Dean Prigmore
Two Worlds Community
Foundation
Lori and Loren Wasserman
Karen and Howard Weiner
Withey Morris Baugh, PLC

\$500-\$999

Anonymous (2)
Janet Baumann
Dian Burke
Carol Burns and Robert Taylor
Marsha Cuddelback and
Michael Desmond
Roy Davidson
JoEllen Doornbos
Mary and D. Robert Dufour

Charlene and David Franklund
Elizabeth and Allan Frigy
Amy Goffman
Pramila, Anand and Uday Gupta
Jean and Robert Guritz
Randolph Henning
Milja and Howard Hohnsen
Allen Johnson
Rose and Dennis Kleidon
Christine and Richard Kovach
Kevin Leahy
Mary Luther
Sue and John Major
Masco
Elaine May
George Meyer and Greg Vogel
Nancy Milburn and James Osman
Jillian and Michael Miller
Barbara Nathan and Paul Hruska
Linda and George Parkins
Amy and Norman C. Robbins
Rosa and Raul Rodriguez
Abbi Rose and Michael Blum
Jim Semmelman and
Raymond Disco
William Semple
William Summers
George Taler
Sanford and Barbara Ullman
Madeline Ura-neck
Henry Whiting

\$250-\$499

Indira Berndtson and
Arthur Bartley
Effi Casey
Kay and Glenn Clements
Antoinette and Susan Corcillo
Elaine and Stephen Crane
Carol Eicher
Elizabeth Ferry and
Michael Mendelsohn
Ellen and Scott Franzen
Fiona and David Friar
Cheryl and Dayton Gilleland
Gardar Gislason
Roberta Gundlach
Alan Isaacson
Sondra and George Juetten
Catherine Keig and
James Hayes
Kathryn and Bill Kerr
J. Spencer Lake
Kelly McCullough
Jeanne and Julius Miller
Joyce and Terry Miller
Lori and Mark Pasteur
John Poulos
Roland Reisley
Edward Riegel

Stephen Roy and Lloyd Kohler
Rosemary Scarcella
Leslie and Ron Shulem
Christopher Tower and
Bob Celio
Kimberley Valentine
Michael Welsh
Carol and Bradford White

IN-KIND DONORS

Heirlooms Jewelry
Talesin Preservation, Inc.

2024 MEMBERS

The Frank Lloyd Wright Foundation thanks the following individuals and organizations for their generous contributions to the Foundation. This list recognizes our loyal members at the Insider Plus level and above, between January 1, 2024, and December 31, 2024.

MASTER CIRCLE MEMBERS (\$1,000 ANNUALLY)

Barbara and Scott Bice
Alexandra Boles-Caron and
Deborah Berkley
Warren F. Bryant
Stefanie A. Cargill and
Jerry D. Cargill
Barbara Manney and
William H. Cole
Denise and Howard Dinot
Ray Disco and Jim Semmelman
Julie and John Douglas
Carla Bailey and Michael Duncan
Gregory English and John Pope
Alice and Barry Fell
Aris Georges
Bruce Gilleland
Kathy and Thomas Glennan
Nancy and Andy Gordon
Delph Gustitus
Joan and George Hall
Thomas Harboe
Jeffrey Hillis
Van Hohman
Jill and Zach Jennings
MJ Johnson
Carolyn and David Johnston
Jenny B. Klein and Lyndie Slack
Susan K. Lindley
Dana G. and
Bruce E. Macdonough
John Matesich
Mary and James Nelson
Madelyn K. and James B. Olack
Barbara and W. Kelly Oliver
Linda and Earl Parker
Sharis and Thorn Pozen
Bruce A. Rader
Victoria H. Roberts and
Anson White
Leslie S. Rycroft and
Tom Baseggio
Dale Morgan and Norman H. Silk
Patrice Thomas and
Teresa A. Spinosa
Susan and Steven Trail
Karen and Howard Weiner
Paul Dalluge and Trent Wilcox
Michelle Neben-Wittich and
Christopher Wittich
Kimberley Valentine
Greg Zarelli and John Bush

BUILDER CIRCLE (\$500 ANNUALLY)

Anita and Bryan Ackermann
Kim L. and Mark Albrecht
Kevin Augunas

Vickie and Robert Baehner
Carla Bailey and
Michael J. Duncan
Margaret and Steven D. Barnhart
John Barry and Dale East
Kristine and Mihael Bartanen
Brandi and Nigel Brayer
Cobyann Berglund
Jan and Anthony Bracamonte
Courtney and Andrew Browne
Constance and Paul S. Carter
Christen Castellano
Kathryn and Douglas Collins
Kajari and Arup Datta
Mary L. and Dan Duckham
Lisa and Terry Dunnam
E Michael Elmaleh
Danya Epstein and
Joseph Wullner
Carol L. and Daniel J. Fertig
Mary Pat Gates and
Edward Matuga
George Geary and Neil Bonner
Cheryl and Dayton Gilleland
Jeannine and Ben Gillikin
Richard Gillons
Lisa Gimmy and Claus Best
Michael Goerss
Margaret and James D. Gray
Susie and Leroy Griffing
George E. Hall
Niel Harrison
Tara Hazzard and Robert Payne
Stephen J. Heine
Bonnie and Mark Howard
Gregory K. Hunt
Michael Izdepski
Laurie, Colton and
George Jackson
Jeri and Brent Kendle
Joni and Dusty Klink
Marsha Klinker
Lorraine and Peter Kornafel
Linda and Chris Kuehne
Robert Lang
Warren D. Lerner
Aaron and Riley Levy
Paul Lustig
John C. Matesich
Robin McFarlane
Thomas Mulvihill
Patrick Murphy
Liz Nielsen and Michael Tenore
Marv and Vicki Nonn
Amy and Greg Olsen
Beth Saiki-Olsen and
Morgan Olsen
Teresa Quale
Kelly Quill and
Stephen Quill-Schuffels
Diana Lubic and Michael D. Rust

Lisa and Bob Schatz
Julie and Timothy Schmolke
Mary Clare and Albert Starshak
Lynn Swanson and Ken Bayer
John S. Thornton
Patricia and
Lawrence M. Timmons
Mark R. Tlachac
Christopher Tunnard
Frederick Vogel
Signe and Winthrop Watson
Patty A. and
Brian L. Westmoreland
Susan Yamuth

INSIDER PLUS (\$250 ANNUALLY)

Tracy and Joseph Abriola
Sara and Dan Adelberg
Rohit Aggarwala
Judy and Richard Ahrens
Craig A. Anderson
Patricia and Craig Anderson
Georgia Andria
Rosemary and Moises Arriaga
Rebecca and Ira Azulay
Mary A. Bacchus
Leila Bakkum and Steve Kreis
Heidi and Robert Bardach
Indira Berndtson and
Arthur A. Bartley
Lauren and Steven Bauer
Joanie and John Bean
Kathy and Scott Beasley
Gwen and Robert H. Beck
Vesna W. and William Beck
Anne and John Bergman
Lauren Bonner
Connie and Phil Booker
Marianne S. and
Donald E. Bradley
Vicki and Karl Bratvold
Sharon and Robert Brenner
Laurie and Joel Brill
Martha J. Brodersen
Richard Brousseau
Avis and David Brown
Courtney and Andrew Browne
Denise Burgess
Shelley and David Burnett
Kaylynn and Dave Burrows
Jean and William Buskirk
Cheryl A. and Phil Carlson
Therese and Thomas M. Carroll
John F. Carter and
Scott J. Haberkorn
Sharon and Kenneth Celic
Sharon Chen Hung and
David Chen
Sharon Dong and Robert Chin

Carol Christensen
 Peter V. Christensen
 Michael Cleveland and
 Nolan Bennett
 Patricia and Gordon Cohen
 Calvin J. Corell
 Norma and Larry E. Crist
 Dawn and Russell Dahl
 MaryAnn and Thomas Dase
 Cyndi DeLuca and
 Mike Koschmeder
 Sean Dennison
 Heidi Doornenball and
 Ben Seaman
 Keely Duffy and Jason Siegler
 Dwight L. Ebke
 Susan Burnett and Stephen Dyer
 Lynn and Doug Edney
 Susan and Chris A. Elser
 Debbie and Tom Erath
 Kathleen Fahey
 Michael A. Thomas Fasis
 Herman H. Felstehausen
 Fei Feng and Jing Xie
 James P. Finerty
 Elaine and J. Richard Fiorillo
 Maria and Ben Fisher
 Cindy and Kevin Fitzgerald
 Janet and Robert Flynn
 Matt Fogle
 Thora Foley and Dennis Turney
 Lois and Charles Folk
 Courtney Fox and Wendy Fox
 Lynn M. and Richard T. Frank
 Ellen and Scott Franzen
 Fiona and David Friar
 Elizabeth and Alan Frigy
 Thomas Fritzlen
 Keith, Leslie and Lindsey Gale
 David Gall and John Clonts
 John Gardner
 Helen and Jay Giesen
 Susanna and
 Nyamah-Sarah Glersaye
 Nancy and Jay Goldenstein
 Agnes and Fred Goldman
 Elaine and Joel Goldstein
 Donna and Jackson Goodwin
 Sarah Gondell and
 Jean-Jacques Chaltiel
 Angela and Edward Gotch
 Denise Gray
 Mary and Harold Grishamore
 Rebecca A. and Scott L. Grossman
 Lisa and Stephen Haffer
 Cody Hartley and
 Santiago Rodriguez
 Linda and Gale E. Heavilin

 Mark Heiman and Peter Heiman
 Katherine Garrett and
 Alex Heintzman
 Susan and Liam Held
 Randolph C. Henning
 Nikki and William Henninger
 Cindy and Mark Hertzberg
 Bethany and William Hicks
 David Hirsch
 Natalie and Christian Hoffmann
 Jacqui Holmes and
 Katerina Clifton
 Sophia and Mike Homfeldt
 Gary D. Hoover
 Ewa Hozakowska and
 Stephen Kelminson
 Robert Huber
 Paulette Beech and
 Randall N. Huff
 Pamela P. and Robert J. Hunt
 Becky Hurley
 Mary Kay and Eric Inglett
 Kathleen and Eric Jones
 Kathleen and Tom Karas
 Barbara and Steven Karges
 Catherine Keig and James Hayes
 Paula and Joseph Kerger
 Katharina and Michael Klouda
 Rickmer Kose
 Ben Kramer
 Sue and Mark Laatsch
 Sondra and Vernon Lee
 Ann Marie and Skip Lei
 Carol G. and Randolph L. Long
 Kay and Ron R. Maassen
 Alisa and Walter Maher
 Janice Mak and Poshing Wah
 Penni and Patrick Malone
 Clark Marion and Timothy Mabley
 Rona Rufin and
 Jonathan Mandabach
 Sarah Mansergh
 Kristin Beck and Jeffrey Marsh
 Marissa Martin and
 Benjamin Carpenter
 Sandy and Christopher Martin
 Sherri C. and Jeff Massey
 Jean and Keith D. Maurer
 Barbara McCampbell and
 Timothy L. Warner
 Julie and Patrick McKune
 Nancy Milburn and James Osman
 Carmine and Joseph Miller
 David M. Miller and
 Grant Almquist
 Karen and Grant Miller
 Jennifer Morrice and
 Jason Harrell

 Karen Morse
 Sandra Rogers and Charles Moss
 Sharlene and John Mullen
 Amy and John Myers
 Anne Nelson
 Carl E. Nelson
 Megan Nelson
 Kamloratana and Raymond
 Netherwood
 Elizabeth Neubig and
 William Vandenberg
 Lynne and Andrew Noreuil
 Julie Nyberg
 Margaret Oleary, Peggy and
 Glenn Tremper
 Karen M. Yamasaki and
 Patrick J. O'Leary
 Sabina and Nils J. Paellmann
 Robin and Jonathan Painter
 Joan Perkins
 Wade Perrow
 Cindy and Davis S. Peters
 Elizabeth and Mark Peterson
 Debbie and Chester Phillips
 Gihyun and Paul G. Pierce
 Jeanette Piesciuk and Mary Mohr
 Rebecca and Jeremiah Pomerleau
 Shirley Rackner and
 Leslie Zuckerman
 Nancy Rafal
 Karen Raffensperger and
 Maura Raffensperger
 Carol Ann Casey and
 Thomas Ramsfield
 Bernard Ranellone
 Donna Reckitt and Frank Balogh
 Louise and Steve Rennecker
 Rob Richards
 James Rhodenhiser and
 Jayin Wavrik
 Susan and John F. Rippinger
 Howard Roark
 Robin Rolfe and
 Arnold L. Saltzman
 Lisa and Darren Rettie
 Jody Romito and
 Josephine Romito
 Barbara and James Rotondo
 Kim and Mark Rupiper
 Ann L. Rypstra
 Robin Marcus and David Salm
 Patty and Paul K. Sandness
 Melatan Riden and Mark Sarosi
 Janet and Daniel Schalk
 Karla and Barry Schmidt
 Carol and Dean H. Schroeder
 Susan Schroeder and
 Gary McNaughton

 Veronica See and Uvaldo Limon
 Verna Shaheen
 Debra and Timothy Shamble
 Lori and Loren Silver
 Wilhelmina Smeets
 Janet and David Smith
 Gabriella and Marshall St. Amant
 Janet and Alan Stanford
 Denise and Ralph Stein
 Christine Strand
 Mary Strouse
 Tricia Su and Kelly Moy
 Mia Summers and Jason Lotvin
 Sandra Sutter and Tom Price
 Stuart Teach
 Richard Terreo
 Stephanie and Todd Thornbury
 Marianne and Joe Tomashefski
 Andrea Trautman and
 Stephen Allen
 Eileen and Michael Trimbach
 Carolyn and Louhon A. Tucker
 Betsey and Bob Unger
 Esther Florsheim and
 Nathan Upham
 Kathy M. and Mike Vitale
 Regina and Joseph C. Volk
 Marianne and Joe Wagner
 Nancy and Bruce Ward
 Ety Green and Stu Warner
 Emily and Kyle Watson
 Theresa Watson
 Elizabeth and Vincent Webb
 Ann Webster and Jaye Robinson
 Clifford Webster
 Margie and Larry Webster
 Linda J. and Steve M. Wegener
 Linda Wegge and Robert Slipke
 Christine and Craig Weinlein
 Bridgette and Dennis Weitzel
 Rebecca and Thomas Wendahl
 Shari and Jerry Wenker
 Robert and Andrew Wentland
 Anne West
 Julie Selmeikeit-Weyn and
 Dandy Weyn
 Carolyn White and
 Martin Yudkovitz
 Jenniffer and
 Stanley Whittingham
 Brooke Williams and Holly Ringleb
 Rachel and Shane Williamson
 Lynn and Dan R. Witthaus
 Sally Woodward
 Cecelia Woody
 Regina and Joseph C. Volk
 Leslie and Frank Yeary

The list on these pages and on the preceding pages reflects members and donors from the 2024 calendar year. The Frank Lloyd Wright Foundation has made every effort to ensure the accuracy of this list. If you have questions, please contact Angy Shearer, Vice President of Advancement, at 602-800-5410.